

## PNEUMATIC-MANUAL ACTUATOR HEAD 227CNM

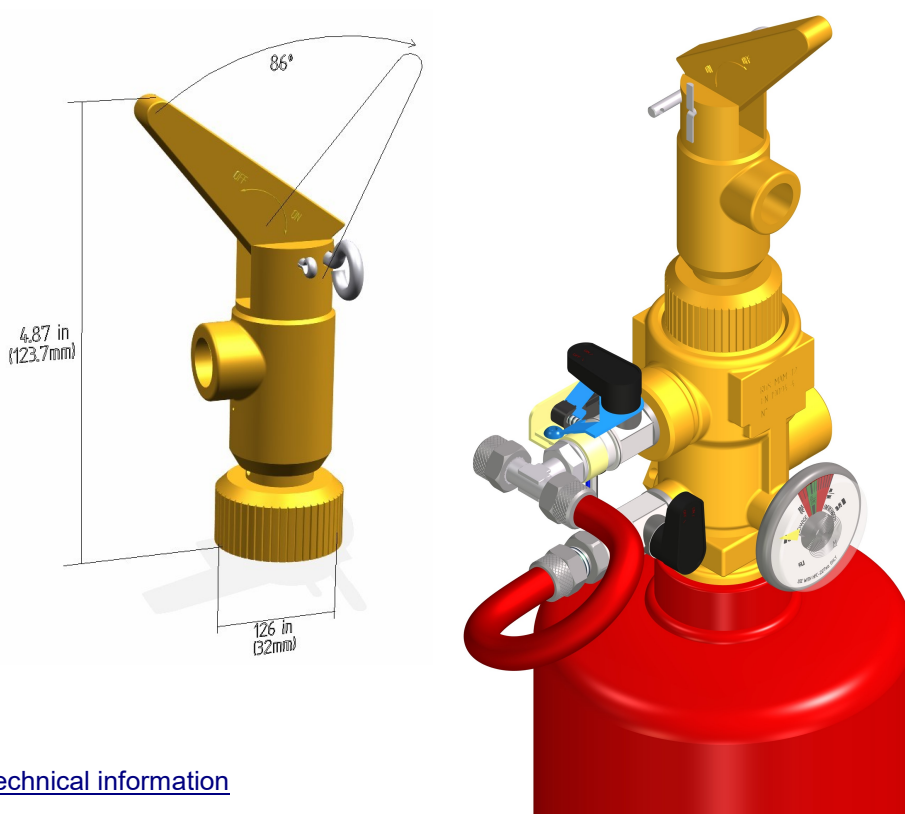
### Description

This actuator head consists in a combination of the manual actuator and the pneumatic actuator and its purpose is to actuate by any of both forces, the valves where it is installed.

The pneumatic-manual actuator head 227CNM is connected to the upper actuation port of the valve RGS-MAM-12-2FD / ST1 / 20ST and End of line type 1 (ST-FL1-Ø6).

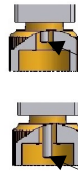
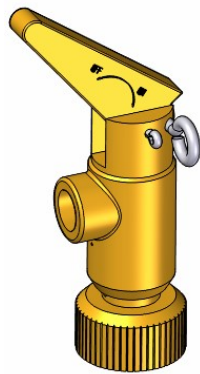
The mechanism for fitting it to the cylinder valve is using a swivel nut which allows it to face the right direction. It can be connected to the electrical actuator head 227SOL / 227SOLC.

All the pneumatic-manual actuator heads have a tee 227TE or an elbow 227CO fitted or an adaptor POA8CU for copper tube in their pneumatic actuation ports. This item is supplied from the factory already fitted with its corresponding O-ring or metal-to-plastic gasket.



### Technical information

Pneumatic-manual actuator head 227CNM	
Re-assembled requirements	Automatic (spring) Lever (manual)
Connection to the upper and side actuation port of the container valve RGS-MAM-12-2FD / ST1 / 20ST or to all the re-assembled electrical actuator heads 227SOL / 227SOLC and End of line type 1 (ST-FL1-Ø6)	3/4" BSP Female
Thread of the pneumatic actuation port (for 227TE or 227CO)	1/4" BSP Female
Joint between the pneumatic-manual actuator head and the Tee or the elbow	O-ring or metal-plastic joint
Route of the lever to obtain the activation	86°

Safety:POSITION 1: NOT ACTUATEDPOSITION 2: ACTUATED

Before threading the pneumatic manual actuator to the activation port of the valve, check that the actuator pointer is retracted (position 1).

If the actuator pointer is in position 2, when threading the pneumatic manual actuator, the gas extinguisher contained in the cylinder could discharge violently, causing serious injuries to the person handling it. Do not install the pneumatic manual actuator without holding the cylinder to the wall with its brackets.

**REVOLVING NUT:**

- Thread it to the valve activation port or electrical actuator.
- Do not add sealant, or teflon, or glue.
- Tighten with the hand.

To remove the pneumatic manual actuator from the valve, loosen its revolving nut by hand.

When doing this operation the valve cap must not be turned, as this will cause the contents of the cylinder to be discharged violently, which could cause serious injuries.

Do not remove the pneumatic manual actuator unless the cylinder is attached to the wall by its brackets.

WARNING: This device is manufactured and approved to be used in fixed extinguishing installations with HFC-227ea. These products are not designed for other use or purpose. If product user has any doubt regarding the application or product use, please contact +34 947 28 11 08. Every not approved use or application or / and any other not approved modification of the product or its function may cause serious accidents or / and personal damages. SIEX 2001 is not responsible for any non-approved use of the application.

IMPORTANT: SIEX 2001 reserves the right to change or modify without previous notice any data or specification due to changes or modification in order to improve the products presented.